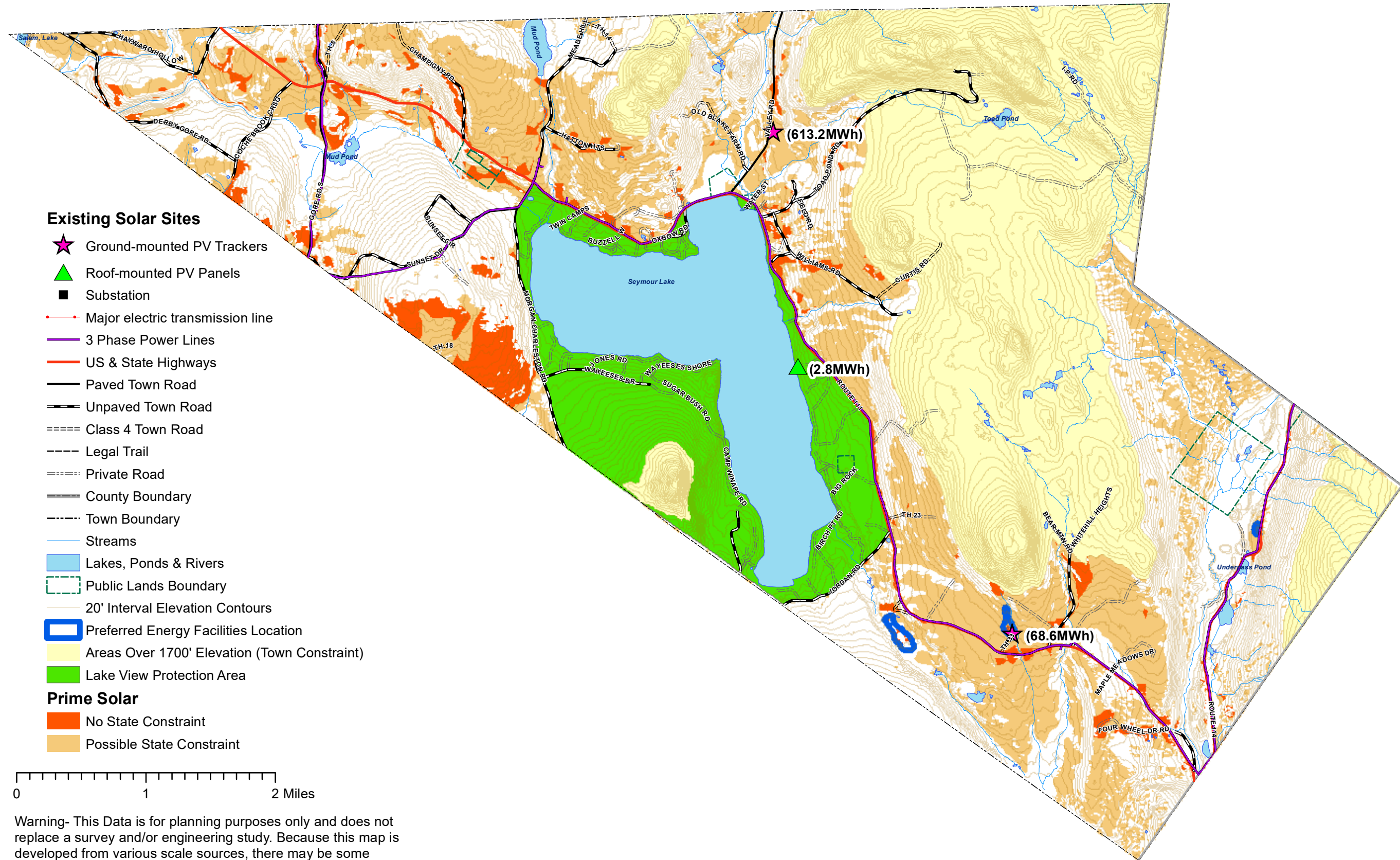


# Town of Morgan, VT Solar Energy Potential Map

06/22/2018



## Existing Solar Sites

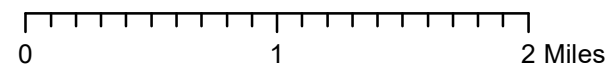
- ★ Ground-mounted PV Trackers
- ▲ Roof-mounted PV Panels
- Substation

- Major electric transmission line
- 3 Phase Power Lines
- US & State Highways
- Paved Town Road
- - - Unpaved Town Road
- = = = Class 4 Town Road
- - - Legal Trail
- - - Private Road
- = = = County Boundary
- - - Town Boundary

- Streams
- Lakes, Ponds & Rivers
- - - Public Lands Boundary
- - - 20' Interval Elevation Contours
- Preferred Energy Facilities Location
- Areas Over 1700' Elevation (Town Constraint)
- Lake View Protection Area

## Prime Solar

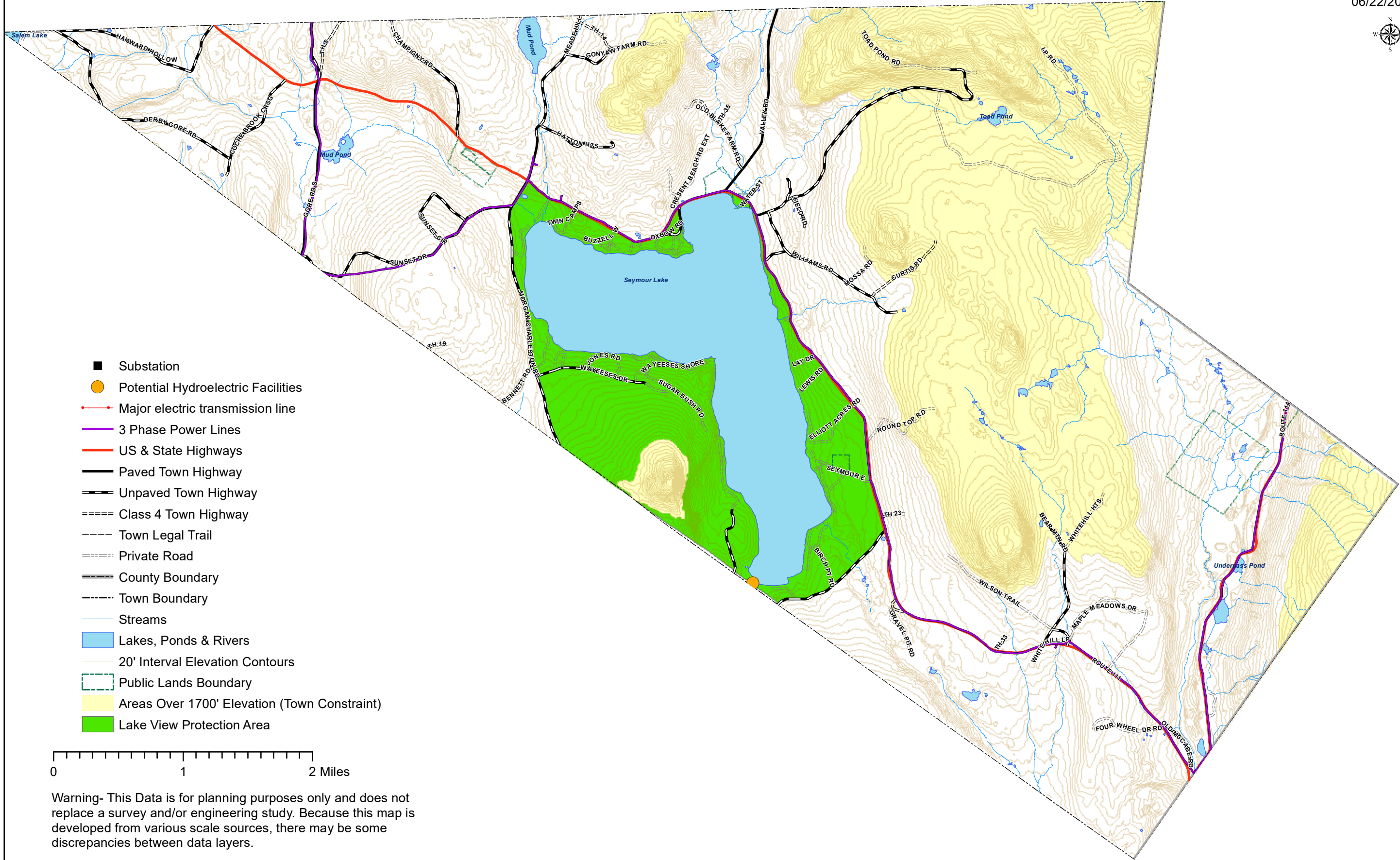
- No State Constraint
- Possible State Constraint



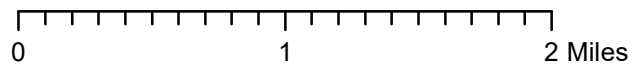
Warning- This Data is for planning purposes only and does not replace a survey and/or engineering study. Because this map is developed from various scale sources, there may be some discrepancies between data layers.

# Town of Morgan, VT Hydroelectric Energy Potential Map

06/22/2018



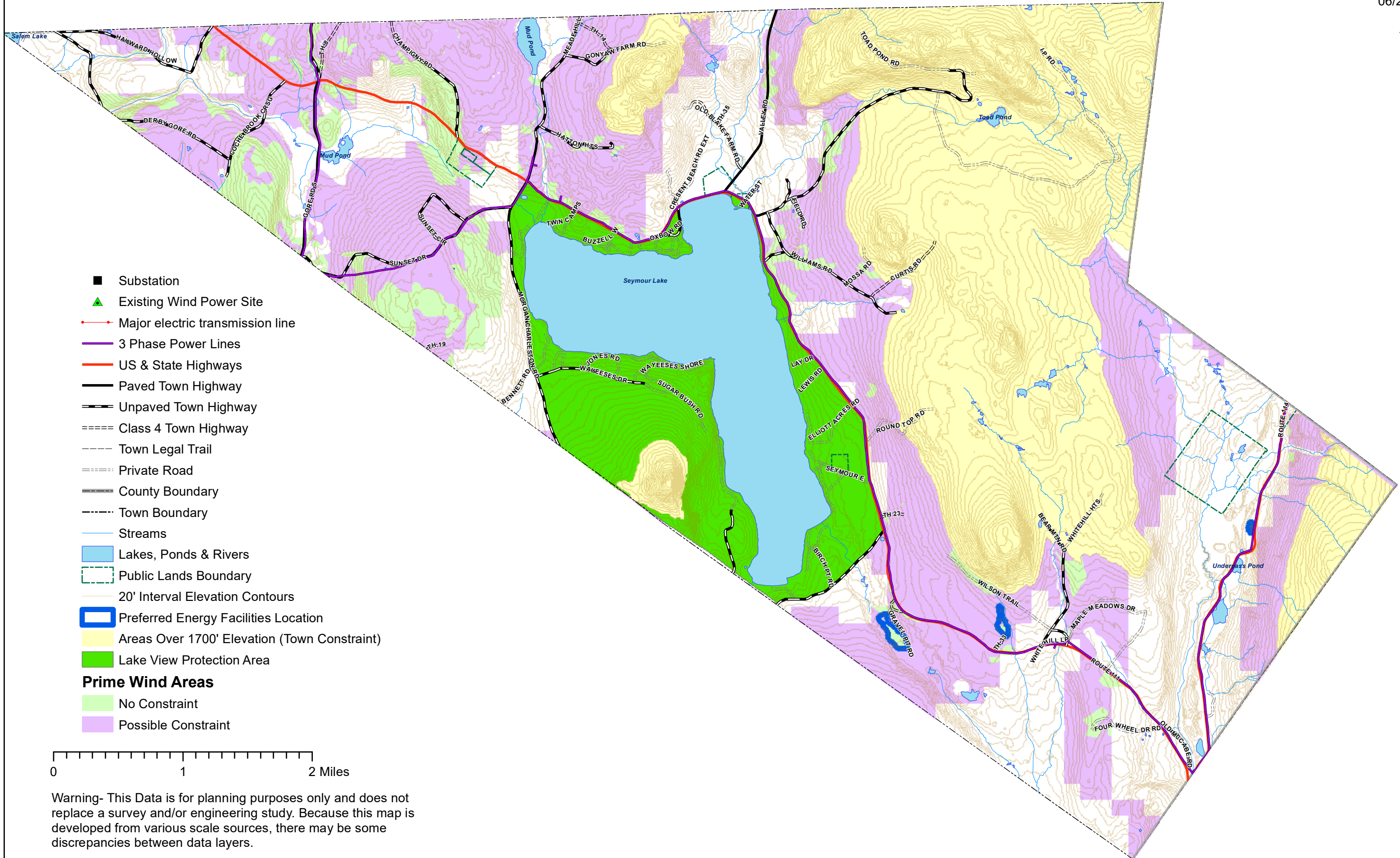
- Substation
- Potential Hydroelectric Facilities
- Major electric transmission line
- 3 Phase Power Lines
- US & State Highways
- Paved Town Highway
- Unpaved Town Highway
- ==== Class 4 Town Highway
- Town Legal Trail
- Private Road
- County Boundary
- Town Boundary
- Streams
- Lakes, Ponds & Rivers
- 20' Interval Elevation Contours
- Public Lands Boundary
- Areas Over 1700' Elevation (Town Constraint)
- Lake View Protection Area



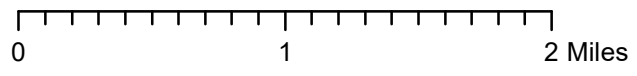
Warning- This Data is for planning purposes only and does not replace a survey and/or engineering study. Because this map is developed from various scale sources, there may be some discrepancies between data layers.

# Town of Morgan, VT Wind Energy Potential Map

06/22/2018



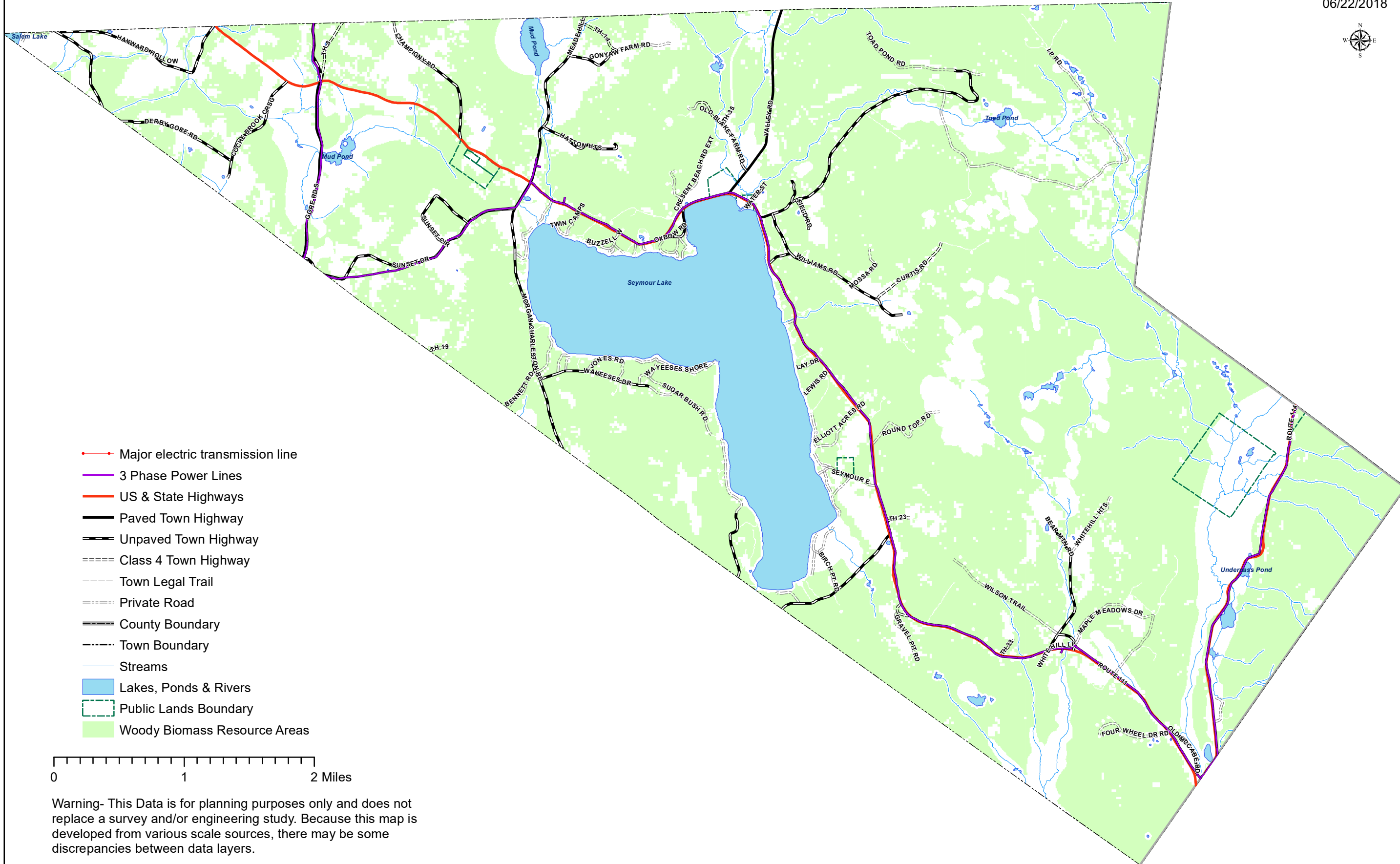
- Substation
- ▲ Existing Wind Power Site
- Major electric transmission line
- 3 Phase Power Lines
- US & State Highways
- Paved Town Highway
- Unpaved Town Highway
- Class 4 Town Highway
- Town Legal Trail
- Private Road
- County Boundary
- Town Boundary
- Streams
- Lakes, Ponds & Rivers
- Public Lands Boundary
- 20' Interval Elevation Contours
- Preferred Energy Facilities Location
- Areas Over 1700' Elevation (Town Constraint)
- Lake View Protection Area
- Prime Wind Areas**
- No Constraint
- Possible Constraint



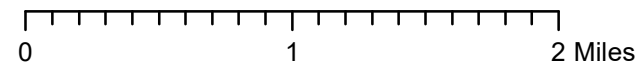
Warning- This Data is for planning purposes only and does not replace a survey and/or engineering study. Because this map is developed from various scale sources, there may be some discrepancies between data layers.

# Town of Morgan, VT Woody Biomass Resource Map

06/22/2018



- Major electric transmission line
- 3 Phase Power Lines
- US & State Highways
- Paved Town Highway
- - - Unpaved Town Highway
- = = = = Class 4 Town Highway
- - - - Town Legal Trail
- = = = = Private Road
- County Boundary
- - - - Town Boundary
- Streams
- Lakes, Ponds & Rivers
- - - - Public Lands Boundary
- Woody Biomass Resource Areas



Warning- This Data is for planning purposes only and does not replace a survey and/or engineering study. Because this map is developed from various scale sources, there may be some discrepancies between data layers.